



**寻找激发灵感的设计**



## 灵感

激发想象力的，  
以其独特的设计理念和度身定制人性化，  
为生活方体验现的时尚新世代。  
... REFERENCE SATHORN – WONGWIANYAI  
是有助您畅通灵感的本範。

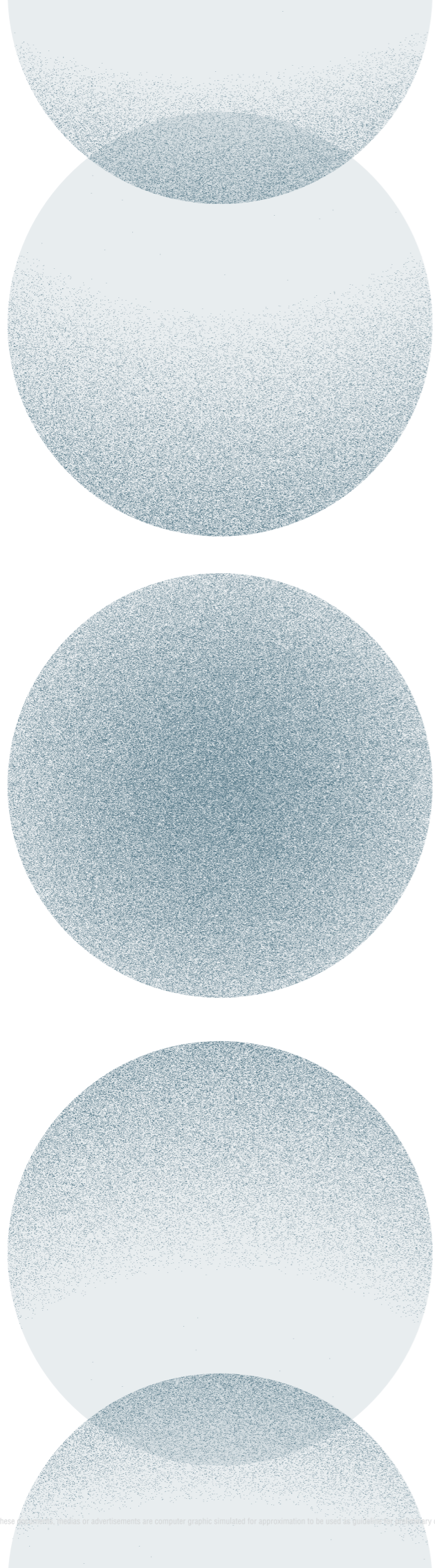
## 激发灵感的设计

我们的理念是相信好的设计鼓舞人心, 因为它对人的心情有正面影响 激发创造力增加正能量。

REFERENCE SATHORN - WONGWIANYAI  
透过激发灵感的来源, 成就崭新的设计, 并为你的生活  
充电, 迎合你的个人生活选择。







## 激发灵感

随着月亮升起, 柔和的月光取代了严酷的日光, 我们的生活被改变了。我们期待着回家, 放松心情。来自光明与黑暗的相互作用, 月球光束形成纹理和图案。

REFERENCE SATHORN - WONGWIANYAI

月景让您的生活方式充满活力。

## 月球设计: 自然 百变, 精雕细琢

灵感来自粗犷的有机大自然, 极简主义美学,  
REFERENCE SATHORN - WONGWIANYAI  
营造舒适、自然的氛围, 刺激所有五种感官提高质量及  
生活和提升我们的身心健康。





Images and illustrations are for advertising purpose only. Contents shown in these documents, medias or advertisements are computer graphic simulated for approximation to be used as guideline for preliminary consideration. The company reserve the right to change without advanced notice.

## 设计

鼓舞人心的梦想空间

The REFERENCE SATHORN – WONGWIANYAI 利用卓越的设计的力量来建设设施和公共区域, 改善并激发了我们的生活。我们的公共区域利用3个重要的现实性设计框架。首先, 每个公共区域都提供舒适和隐私。其次, 每个区域都可以轻松适应每个住户的需求。而且, 最重要的是, 每个公共区域有草木茂盛的花园旨在提高住户的身心健康。





Images and illustrations are for advertising purpose only. Contents shown in these documents, medias or advertisements are computer graphic simulated for approximation to be used as guideline for preliminary consideration. The company reserve the right to change without advanced notice.

## 月亮大厅

阳光从月亮的单色表面反射出来, 营造出独特曲线的银色光芒, 给人一种温暖而温馨的感觉。



## 月球休息室

极简主义设计带来最大的舒适度, 提供充足的空间让您尽情享受、放松和消除疲劳。







Images and illustrations are for advertising purpose only. Contents shown in these documents, medias or advertisements are computer graphic simulated for approximation to be used as guideline for preliminary consideration. The company reserve the right to change without advanced notice.

## 轨道共享空间

每天都会有新的灵感源泉围绕着你; 这个共享空间给人无限的创意想象。





Images and illustrations are for advertising purpose only. Contents shown in these documents, medias or advertisements are computer graphic simulated for approximation to be used as guideline for preliminary consideration. The company reserve the right to change without advanced notice.

## 超越月亮俱乐部

通过全面性的方法增强您的健康，  
过上更鼓舞人心的生活。

- 设备齐全的健身中心
- 瑜伽和普拉提
- 日蚀温泉
- 飞月休息室

## 日蚀温泉



Images and illustrations are for advertising purpose only. Contents shown in these documents, medias or advertisements are computer graphic simulated for approximation to be used as guideline for preliminary consideration. The company reserve the right to change without advanced notice.





Images and illustrations are for advertising purpose only. Contents shown in these documents, including advertisements are computer graphic simulated for approximation to be used as guideline for preliminary consideration. The company reserve the right to change without advanced notice.

## 飞月休息室

开阔的空间提供从黎明到黄昏的完美城市景观。更是一个连接和逃离的专属空间。





Image and illustration are for marketing purpose only. Contents shown in these documents, media or advertisements are computer-generated simulation for approximation only and should be used as guideline for preliminary consideration. The company reserve the right to change without advanced notice.

## 项目资料

**土地面积** 3-2-72.8 莱 (约5891平方米)

**总单位** 819 单位

**A座32层** 住宅单位数量 216 单位  
商用单位数量 1 单位

**B座51层** 住宅单位数量 599 单位

**C座** 商用单位数量 3 单位

**单位类型**

开放式单位	24 - 27	平方米
1房单位	31 - 32	平方米
1房加大单位	32.5 - 53	平方米
2房单位	70 - 72	平方米

**设施**

**A座** 1楼 月亮大厅, 月球休息室, 商用单位 (商店 4)  
10楼 新月亭, 水上浮动露台, 游乐场  
31楼 健身中心, 瑜伽, 普拉提, 月球甲板

**B座** 1楼 轨道共享空间  
50楼 月亮穴游泳池  
51楼 飞月休息室, 日蚀温泉

**C座** 1楼 商用单位 (商店1-3)  
2楼 礁石空中花园





Images and illustrations are for advertising purpose only. Contents shown in these documents, medias or advertisements are computer graphic simulated for approximation to be used as guideline for preliminary consideration. The company reserve the right to change without advanced notice.

## 奢华设计激发生活灵感

尽管 REFERENCE SATHORN – WONGWIANYAI 的各个单元大小不同,但总体而言,项目的设计理念是统一的。每个住宅都旨在最大限度地利用空间并增加功能以满足新一代的每一个需求。此外,每个单元的装饰和装修都具有一流的品质和感觉,符合住户的显赫声望的地位。



Images and illustrations are for advertising purpose only. Contents shown in these documents, medias or advertisements are computer graphic simulated for approximation to be used as guideline for preliminary consideration. The company reserve the right to change without advanced notice.

## 开放式单位

精心设计充分利用所有空间, 每个单位都配备灵活的家具, 单位内更置有充

份的存储空间和步入式衣帽间, 以适应您独特的生活方式。

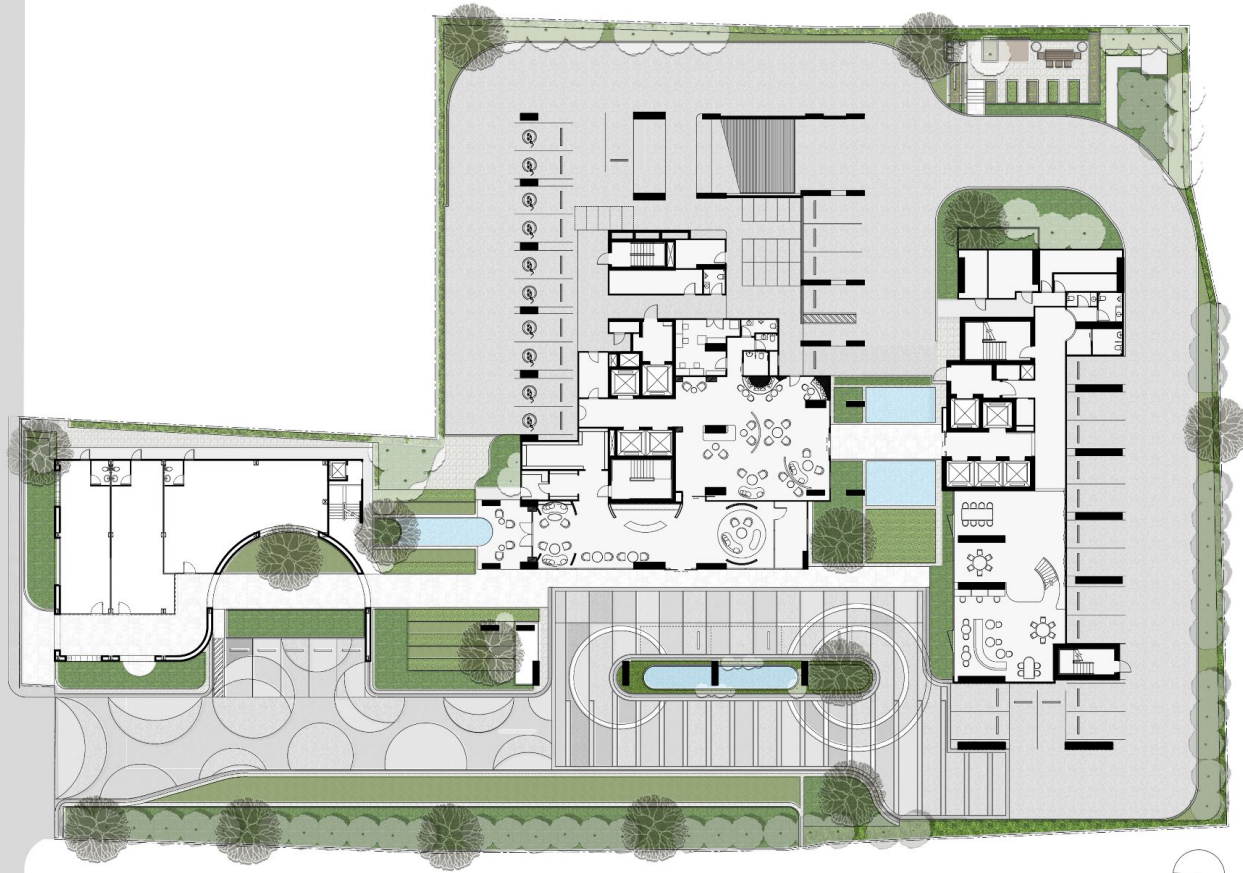


## 2房单位

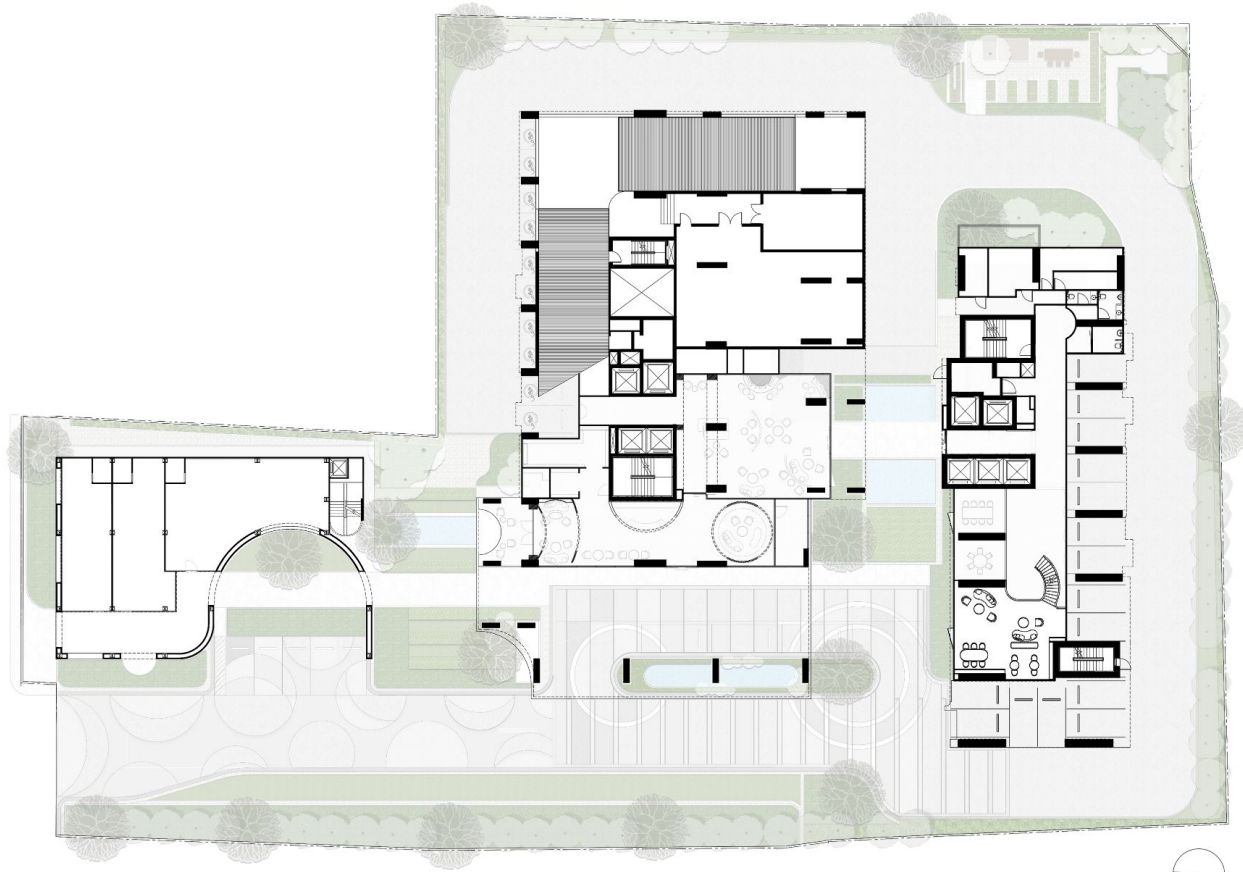
优越的单位, 拥有超宽的视野观景, 可欣赏优美的全景。开放式布局提供最大的灵活性, 以适应您独特的生活方式。



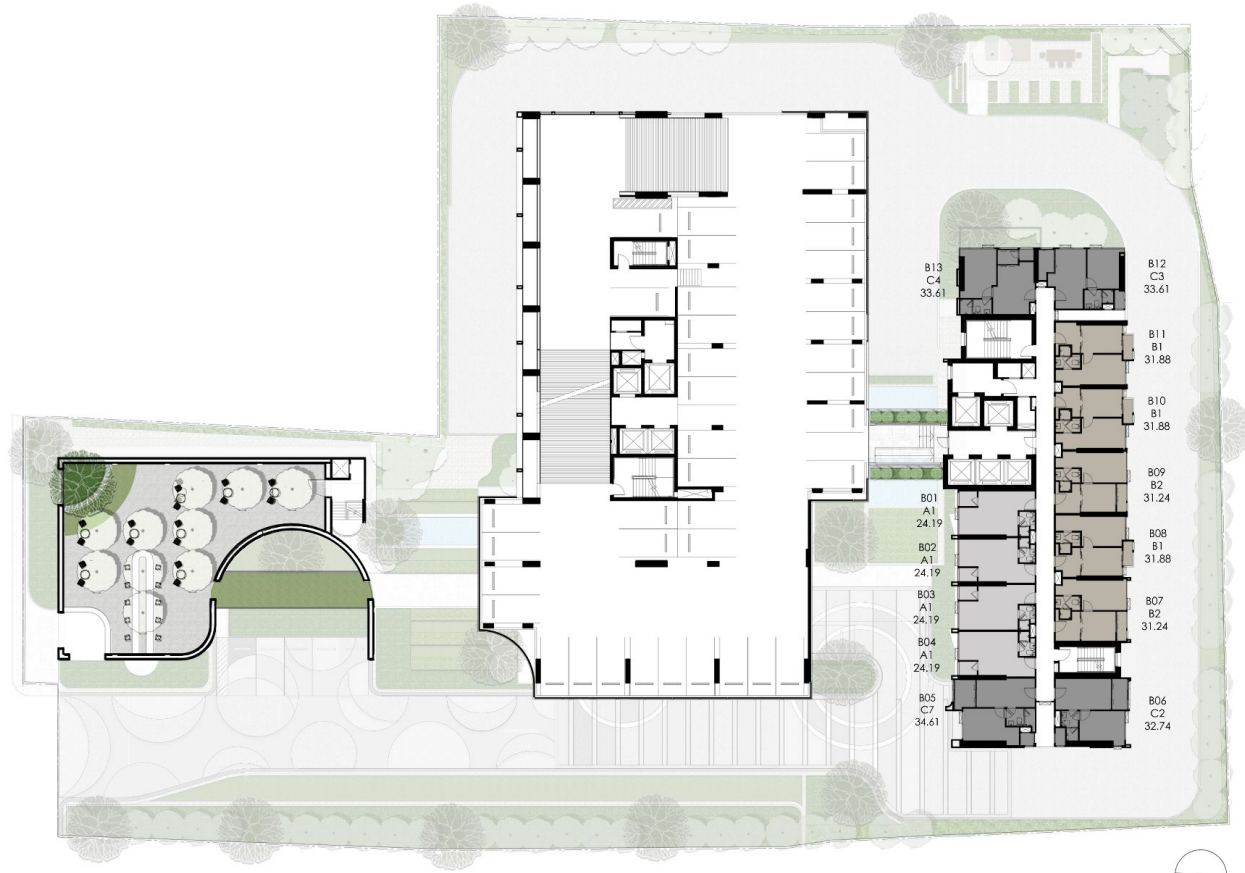




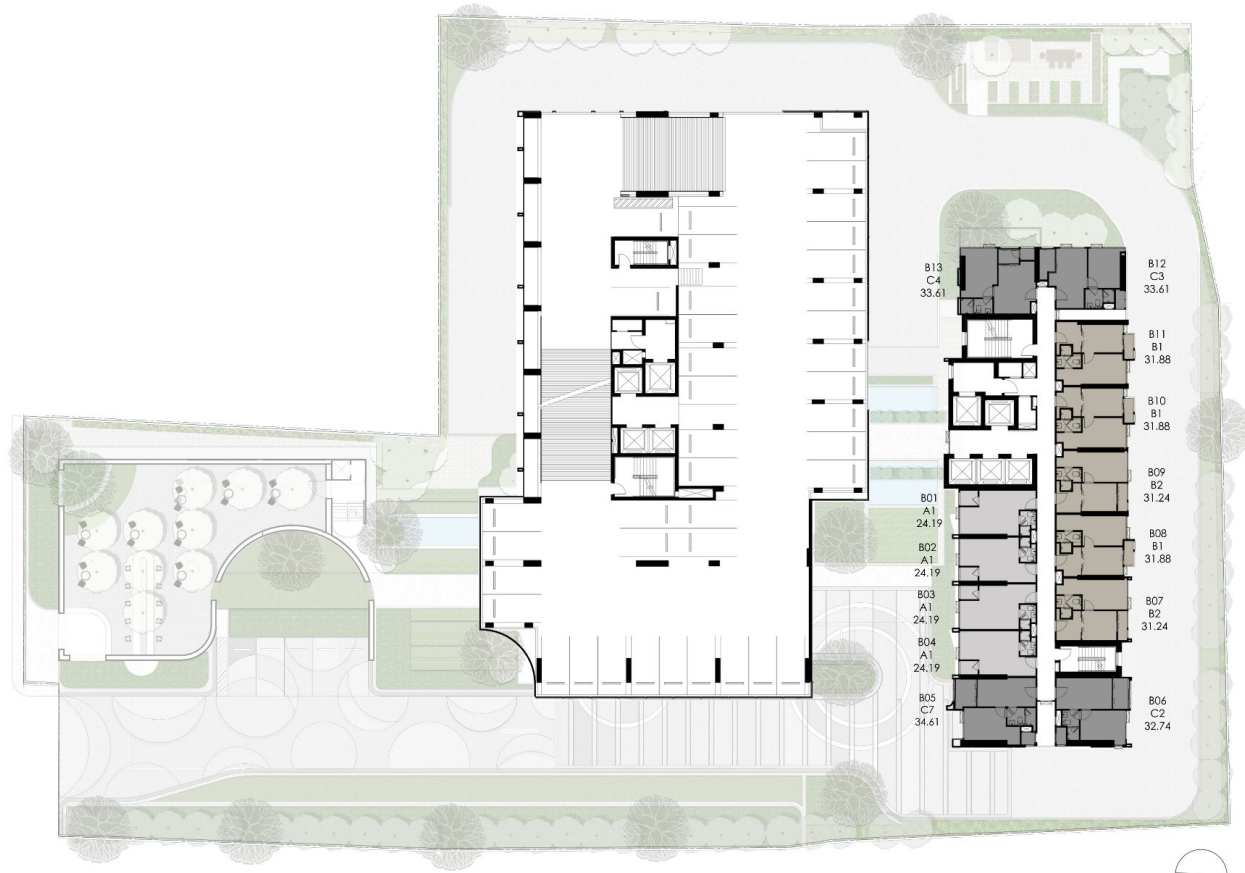
1<sup>ST</sup> FLOOR PLAN



1M FLOOR PLAN

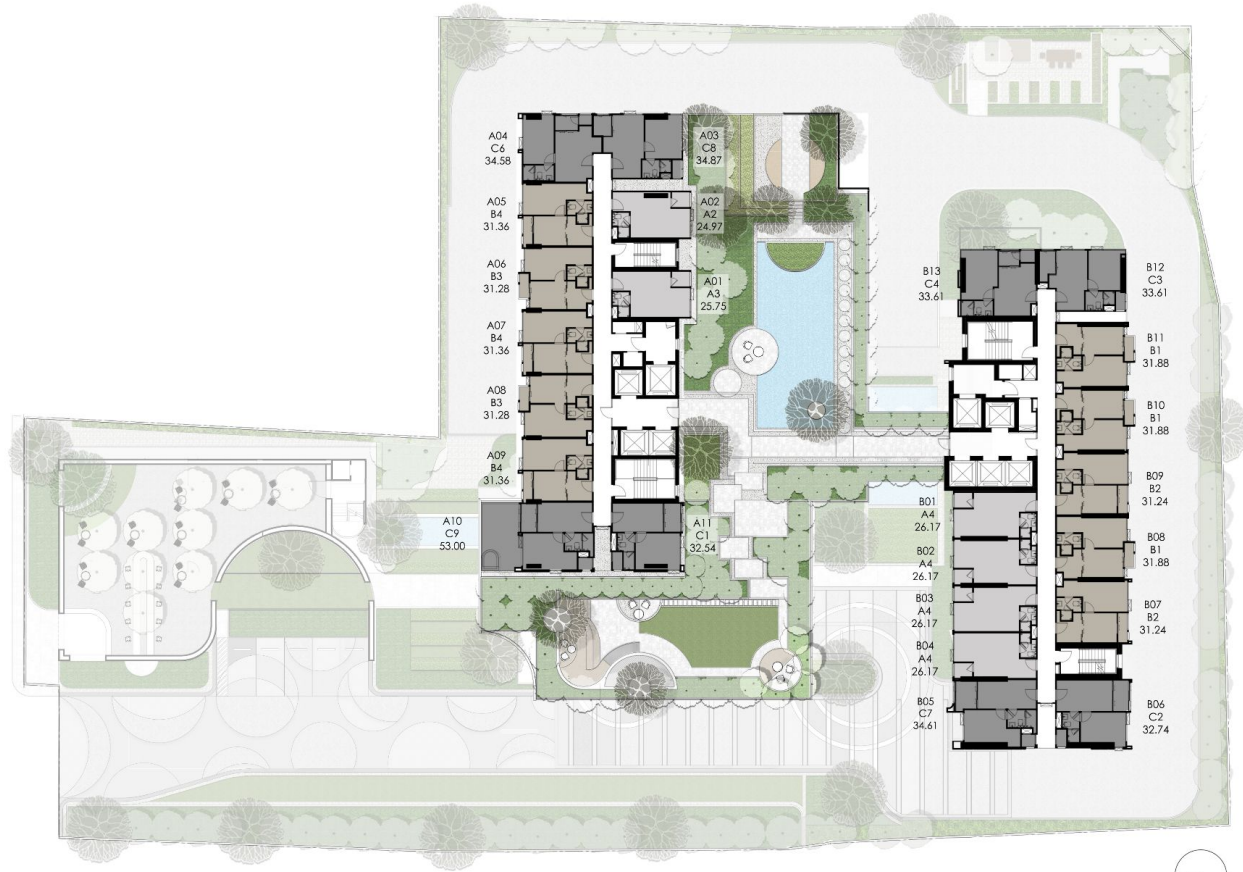


2<sup>ND</sup> FLOOR PLAN

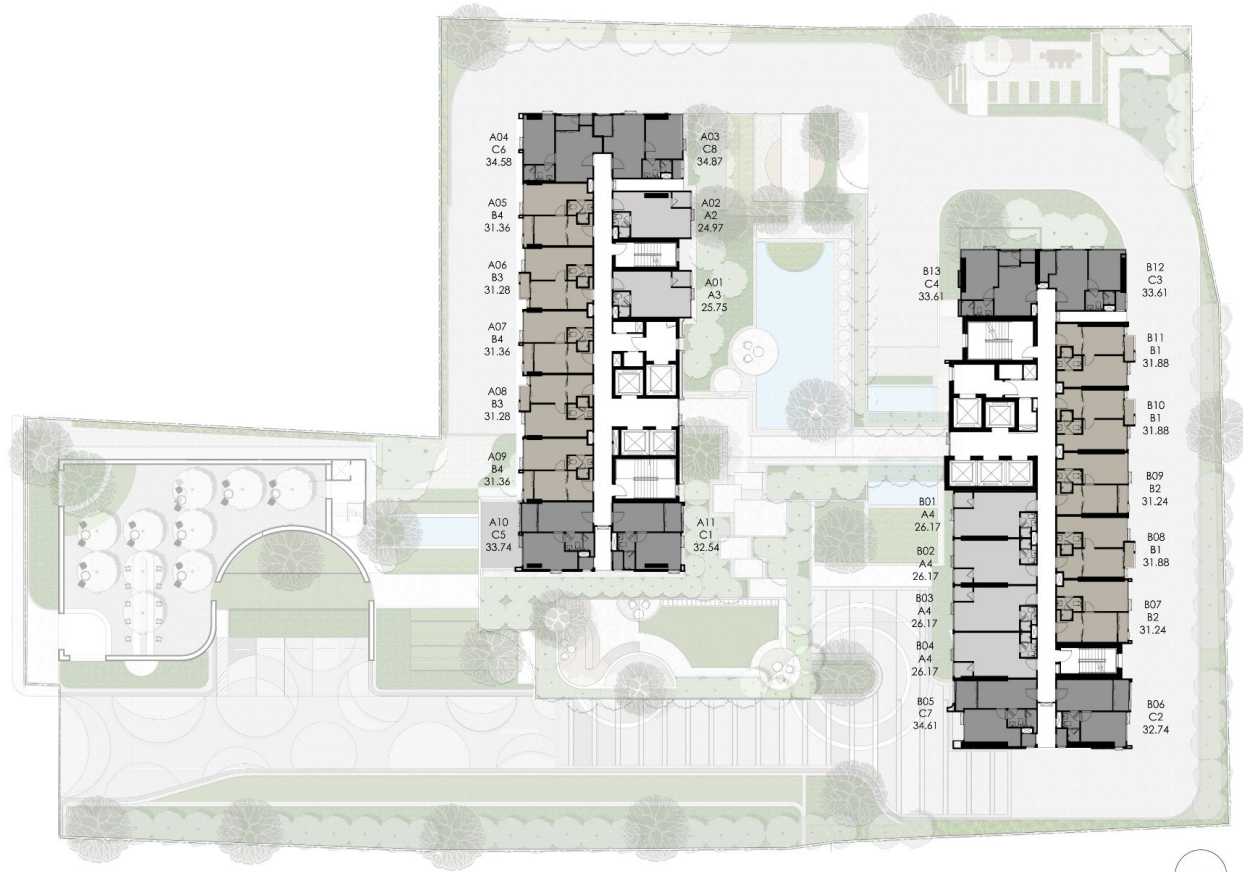


3<sup>RD</sup> - 9<sup>TH</sup> FLOOR PLAN



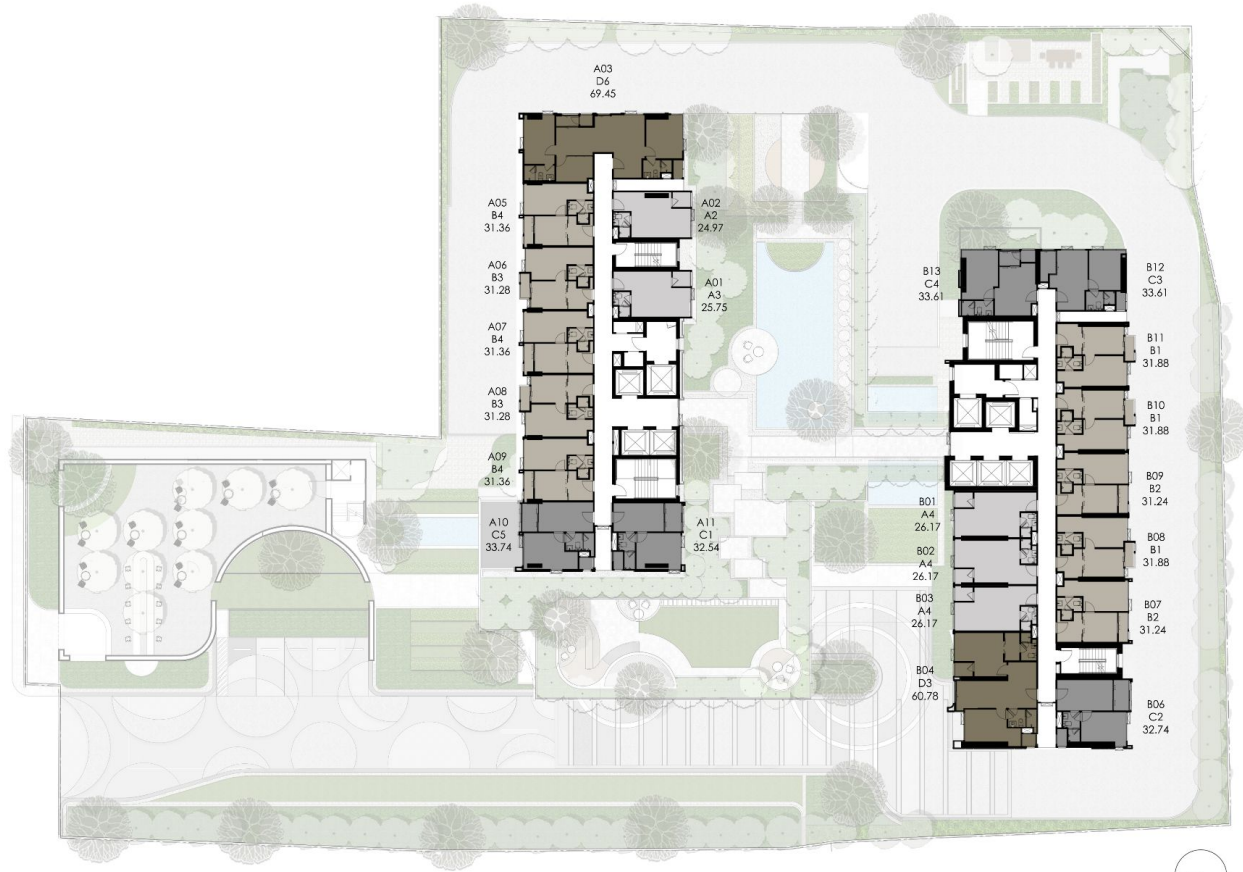


10<sup>TH</sup> FLOOR PLAN

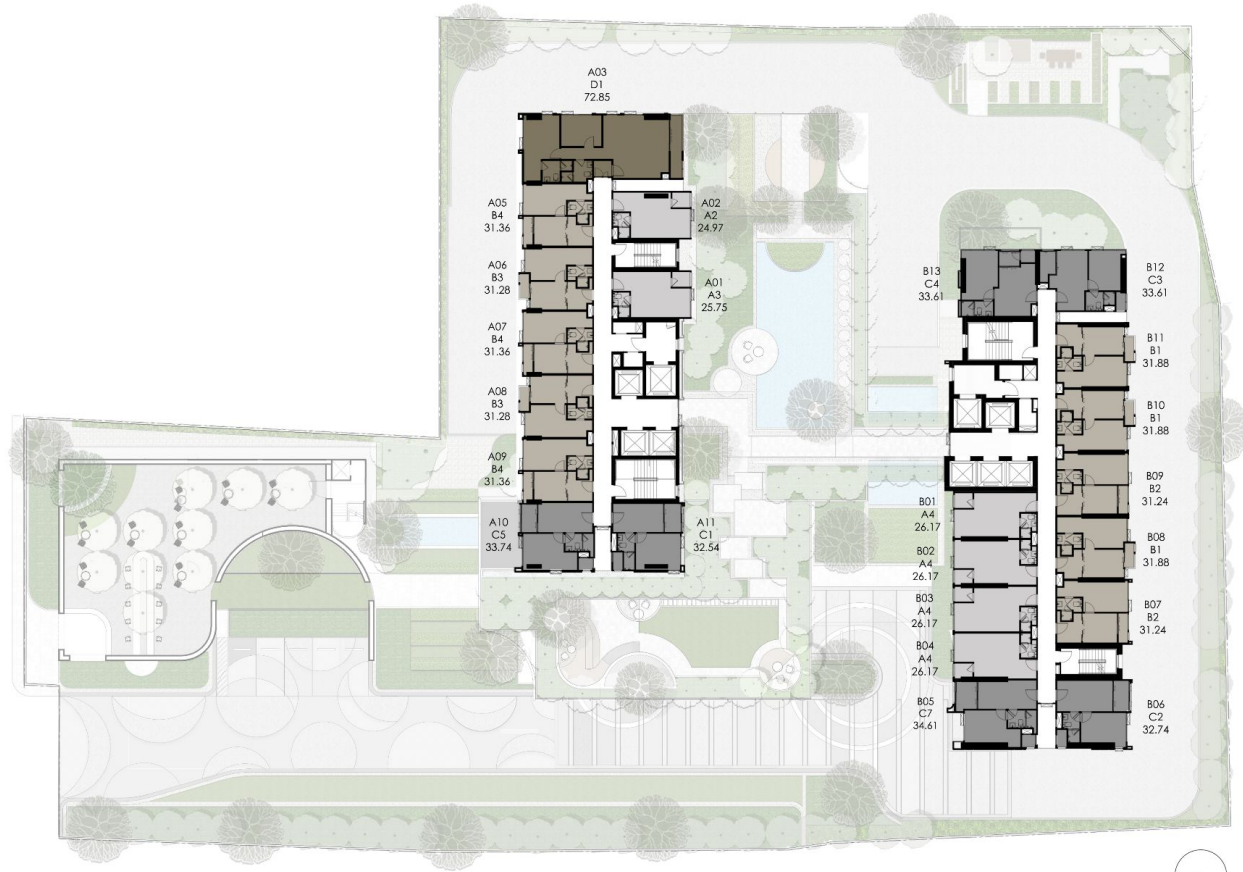


11<sup>TH</sup>, 12<sup>TH</sup>, 14<sup>TH</sup>, 15<sup>TH</sup> FLOOR PLAN



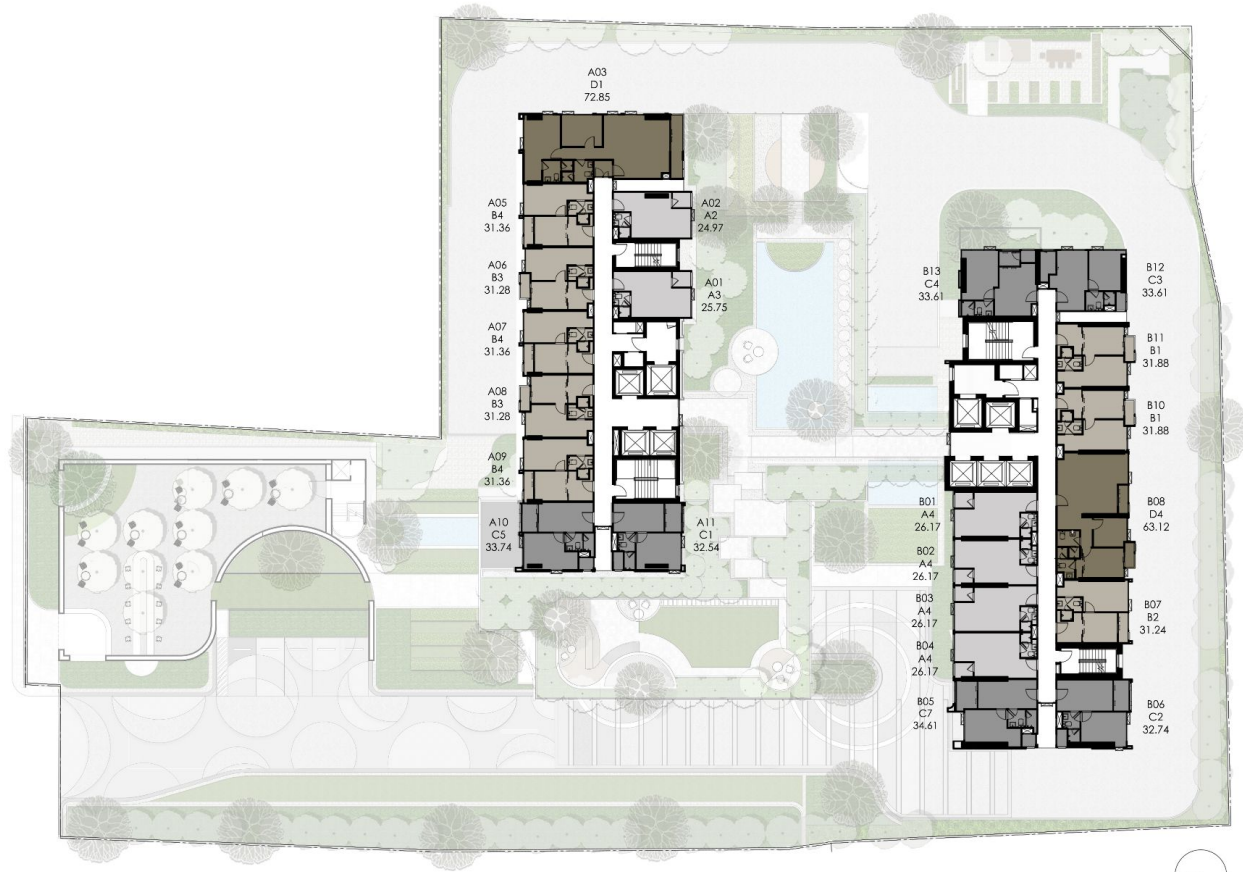


12<sup>TH</sup> FLOOR PLAN

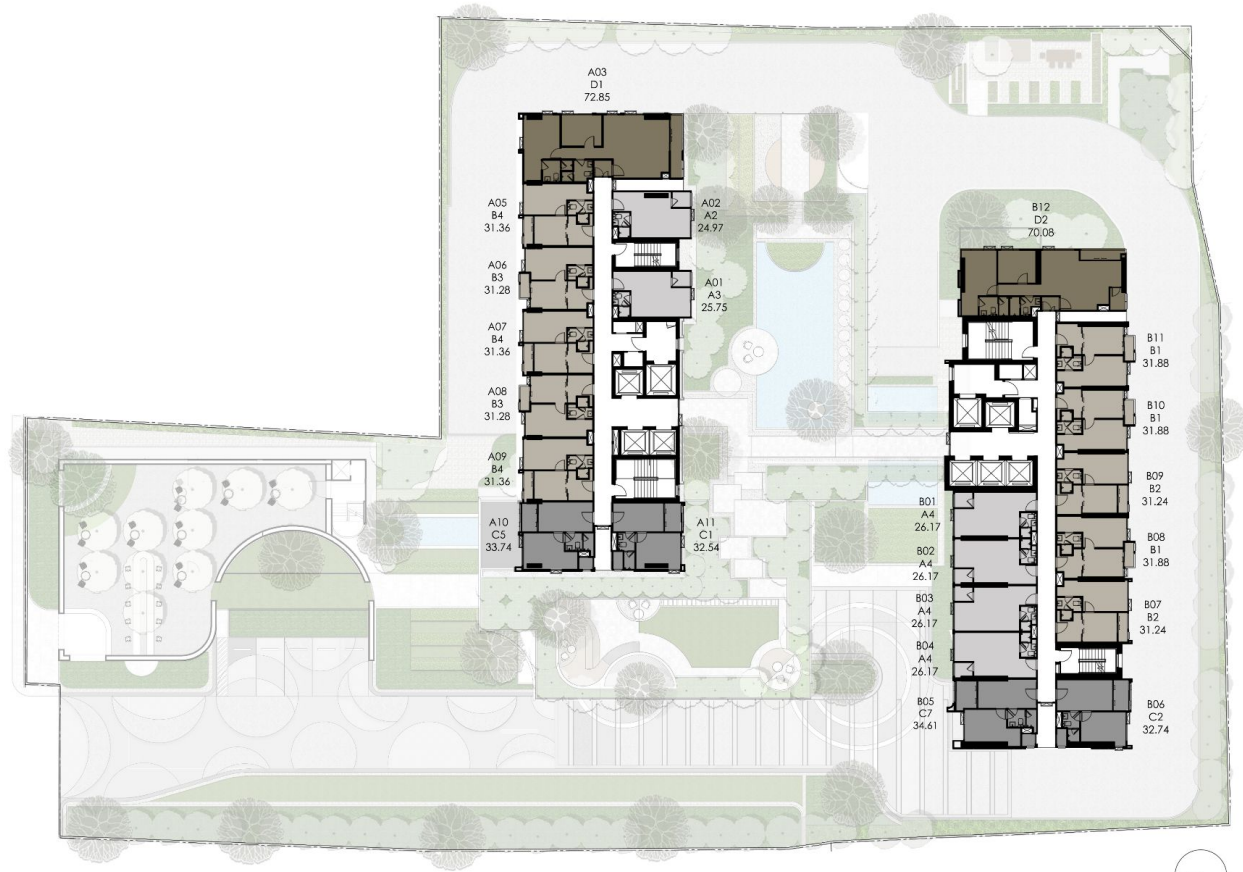


16<sup>TH</sup>, 17<sup>TH</sup>, 18<sup>TH</sup>, 19<sup>TH</sup>, 21<sup>TH</sup> FLOOR PLAN



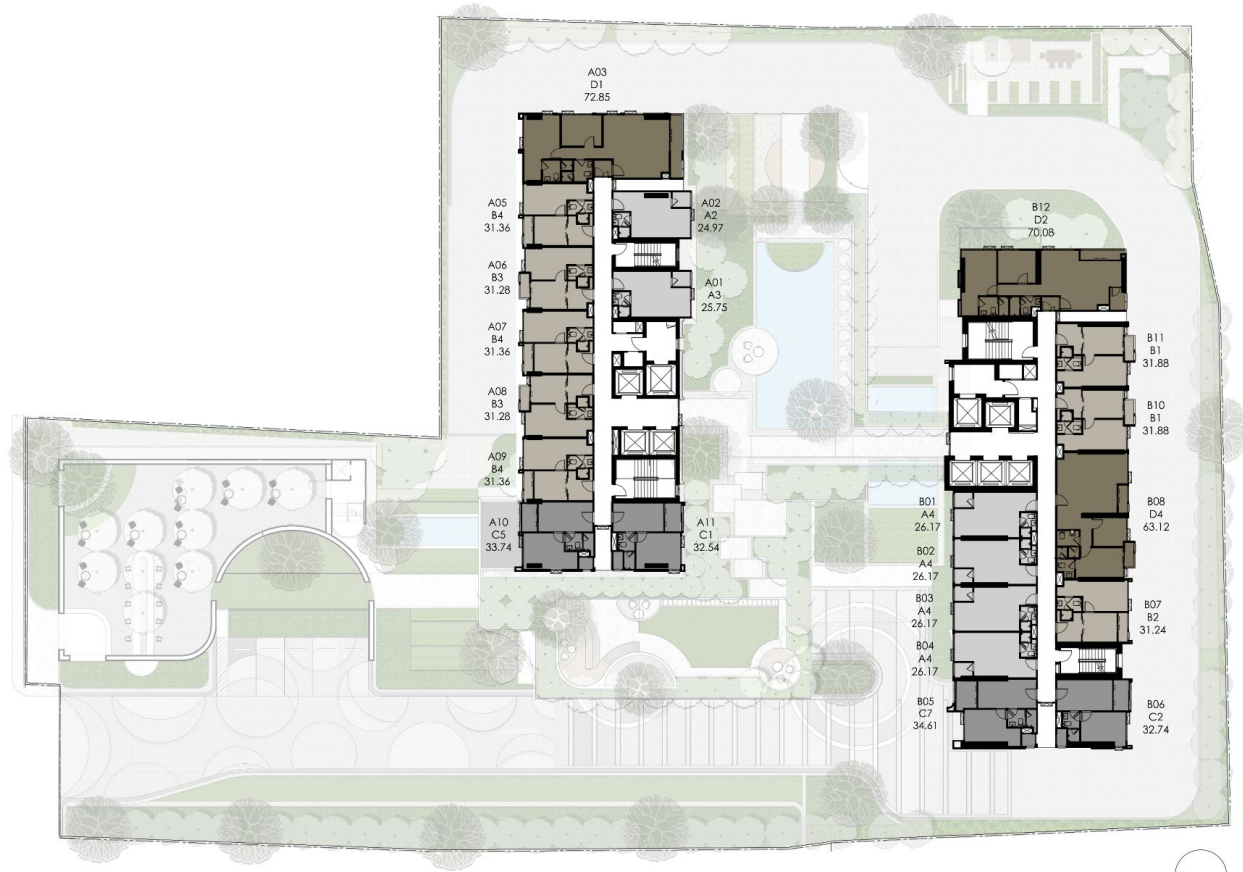


20<sup>TH</sup>, 22<sup>ND</sup>, 23<sup>RD</sup>, 24<sup>TH</sup> FLOOR PLAN

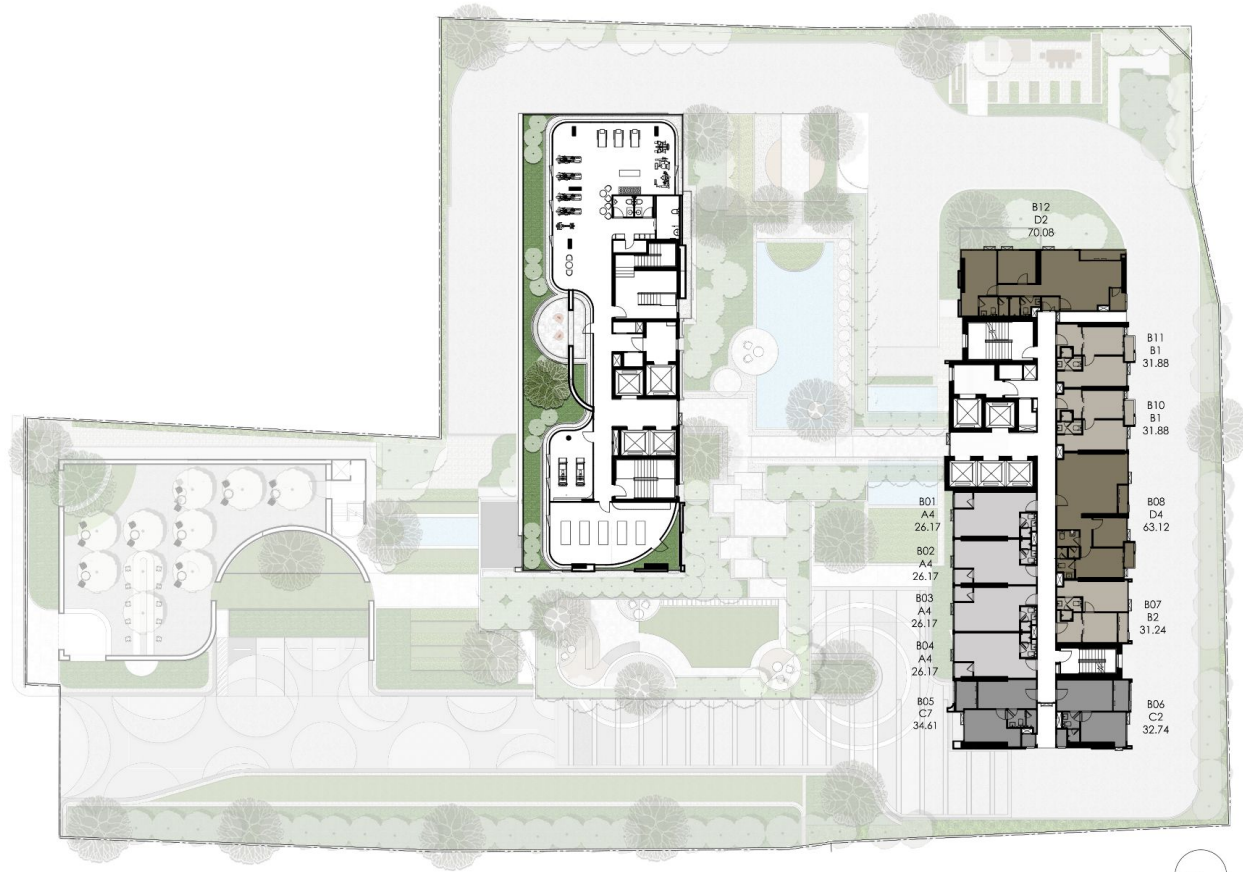


25<sup>TH</sup> FLOOR PLAN



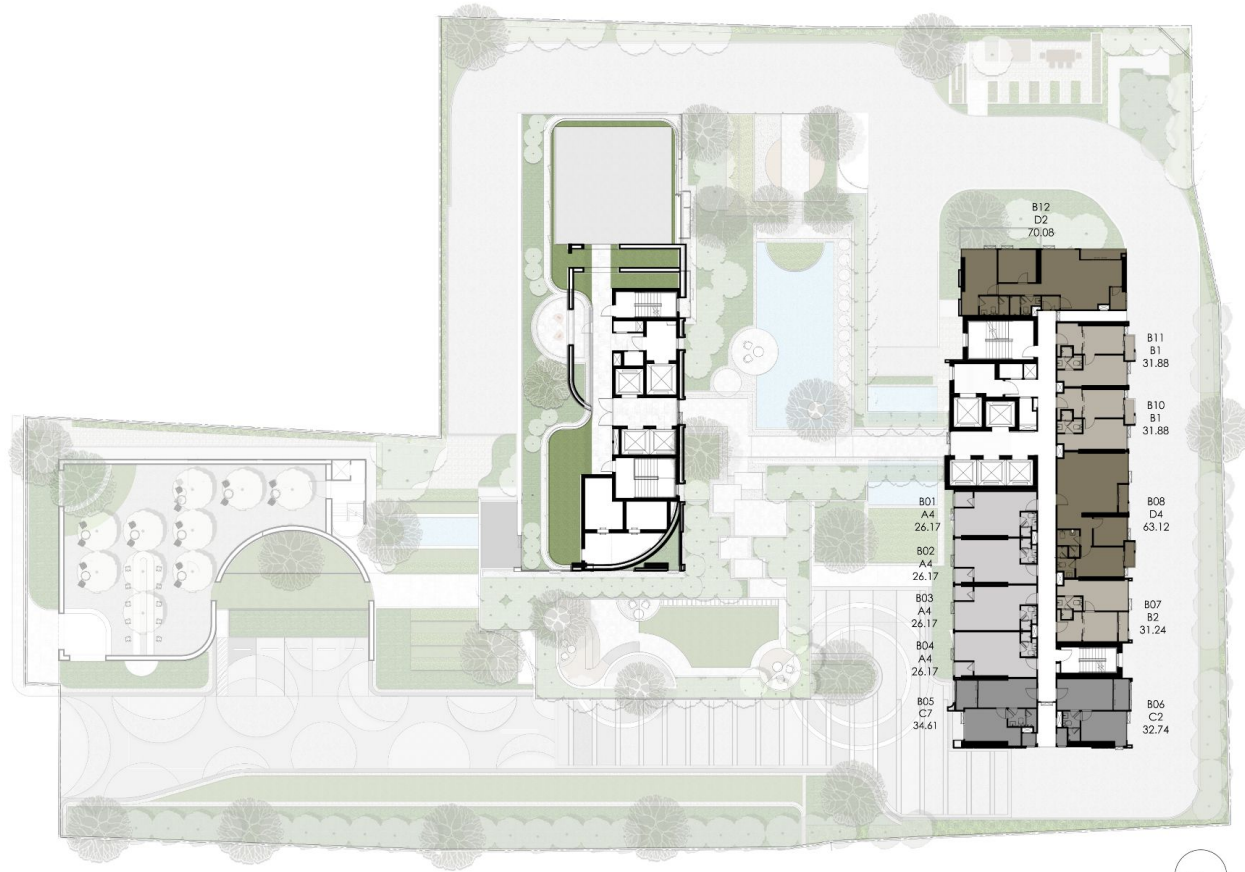


26<sup>TH</sup>, 27<sup>TH</sup>, 28<sup>TH</sup>, 29<sup>TH</sup>, 30<sup>TH</sup> FLOOR PLAN

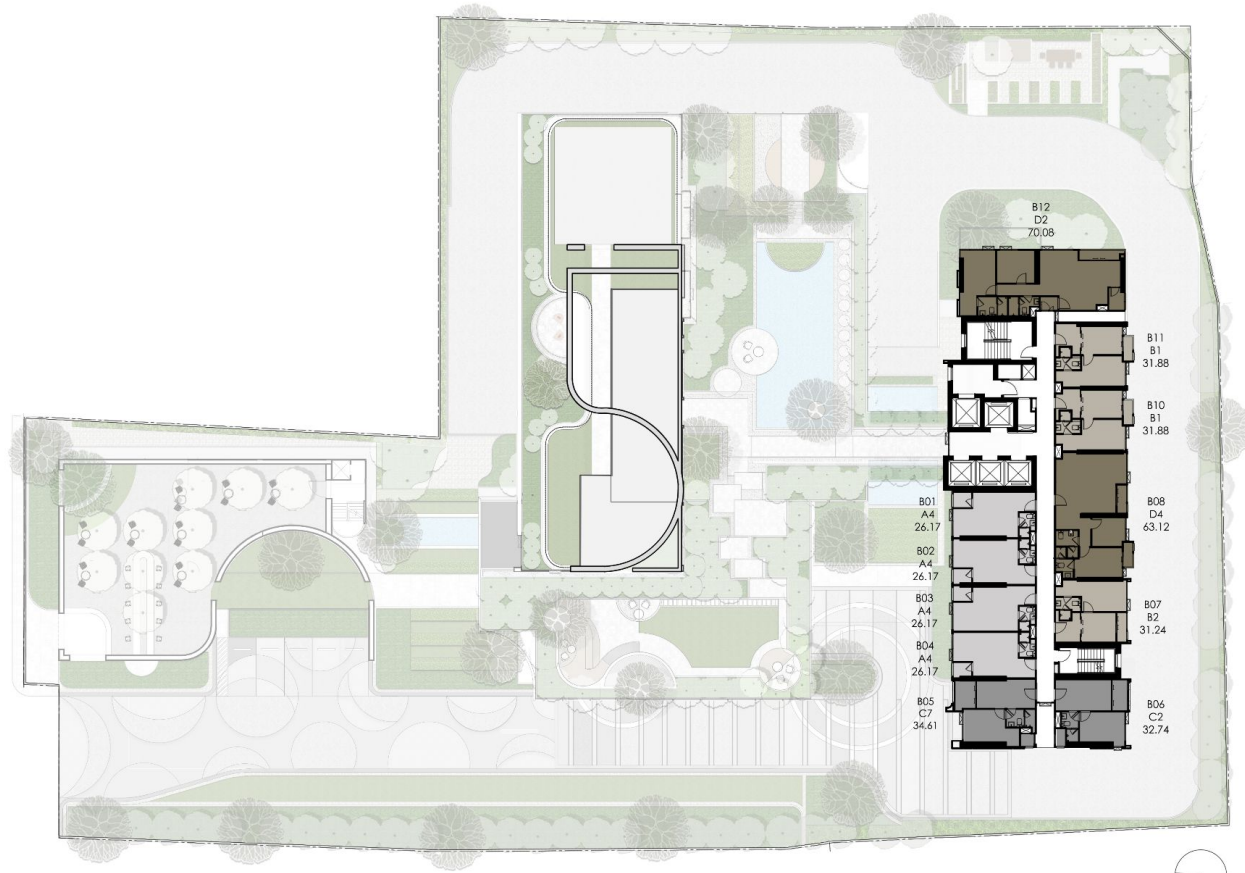


31<sup>ST</sup> FLOOR PLAN



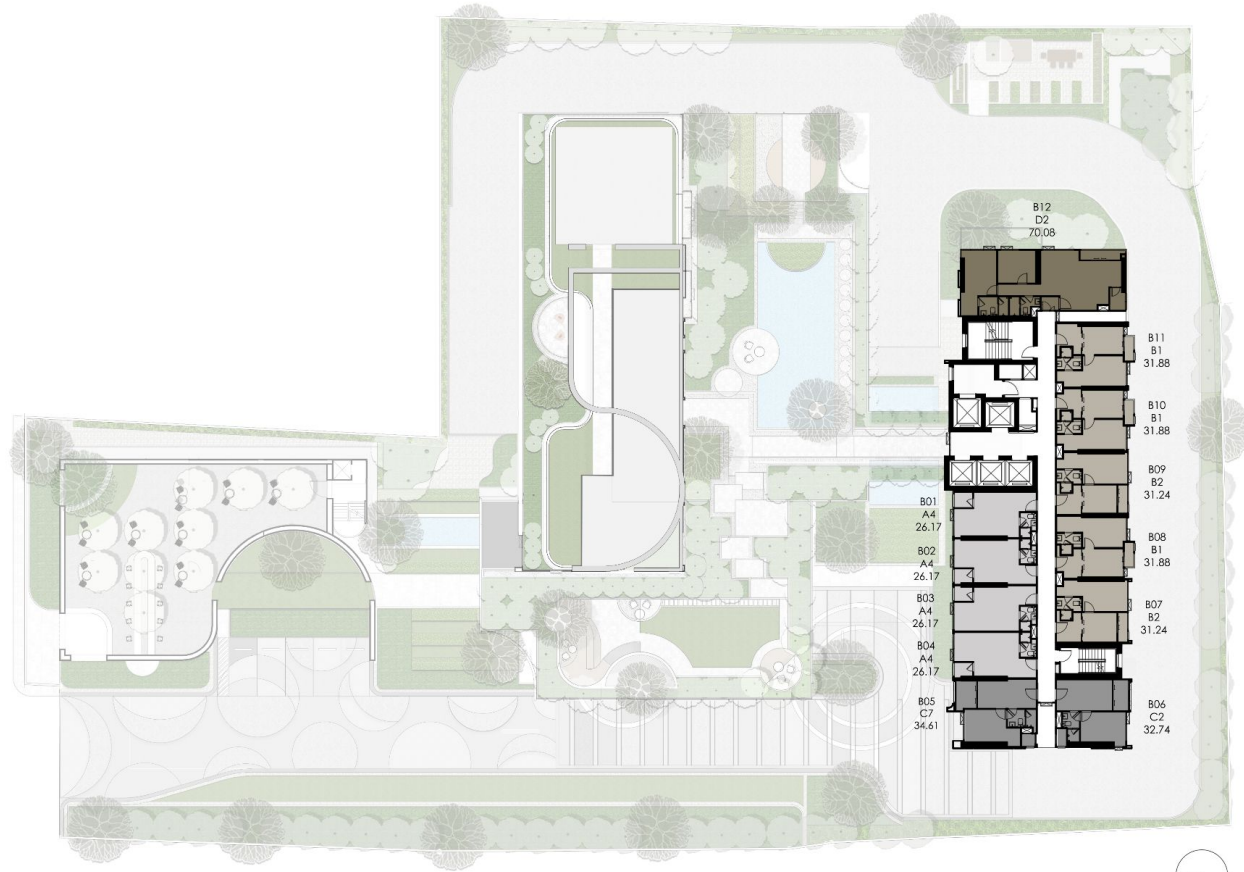


32<sup>ND</sup> FLOOR PLAN

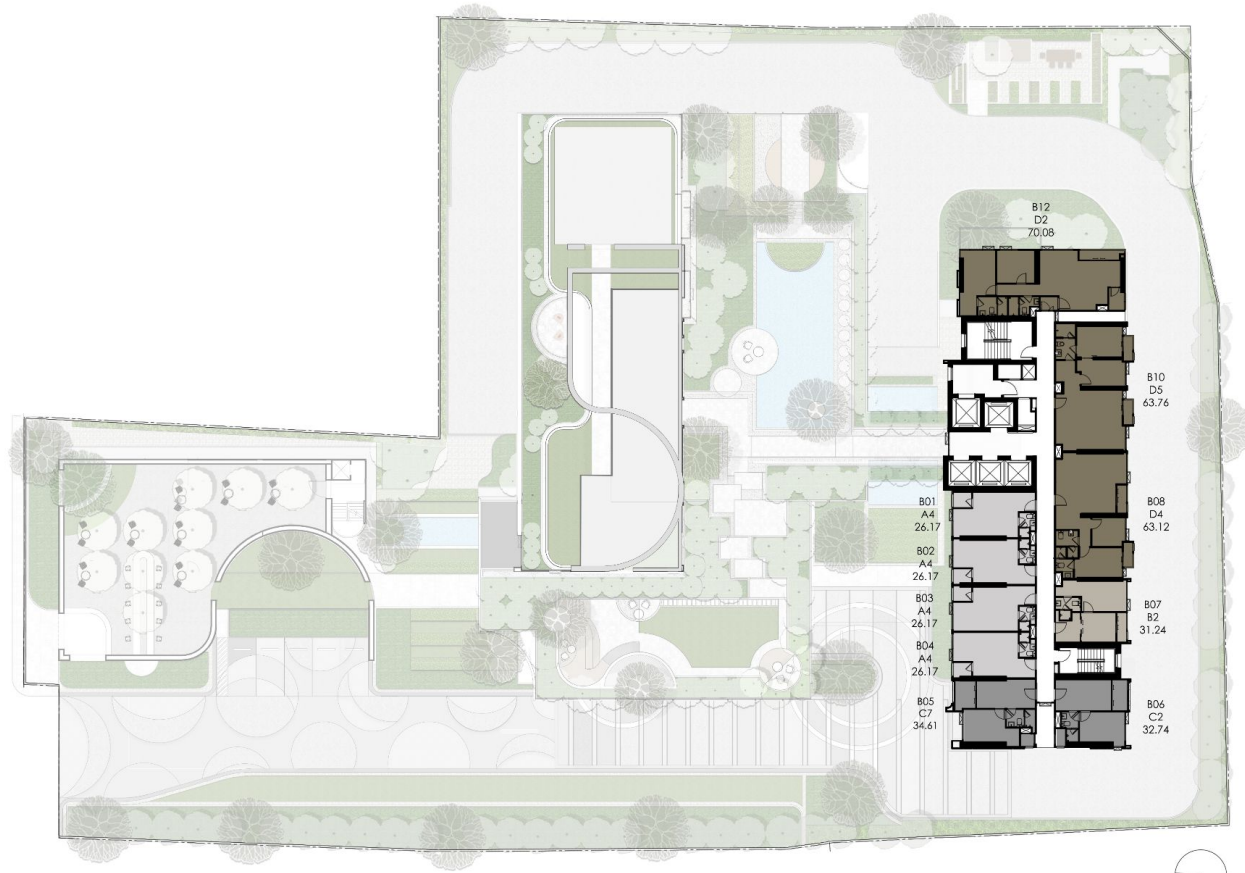


33<sup>RD</sup> FLOOR PLAN



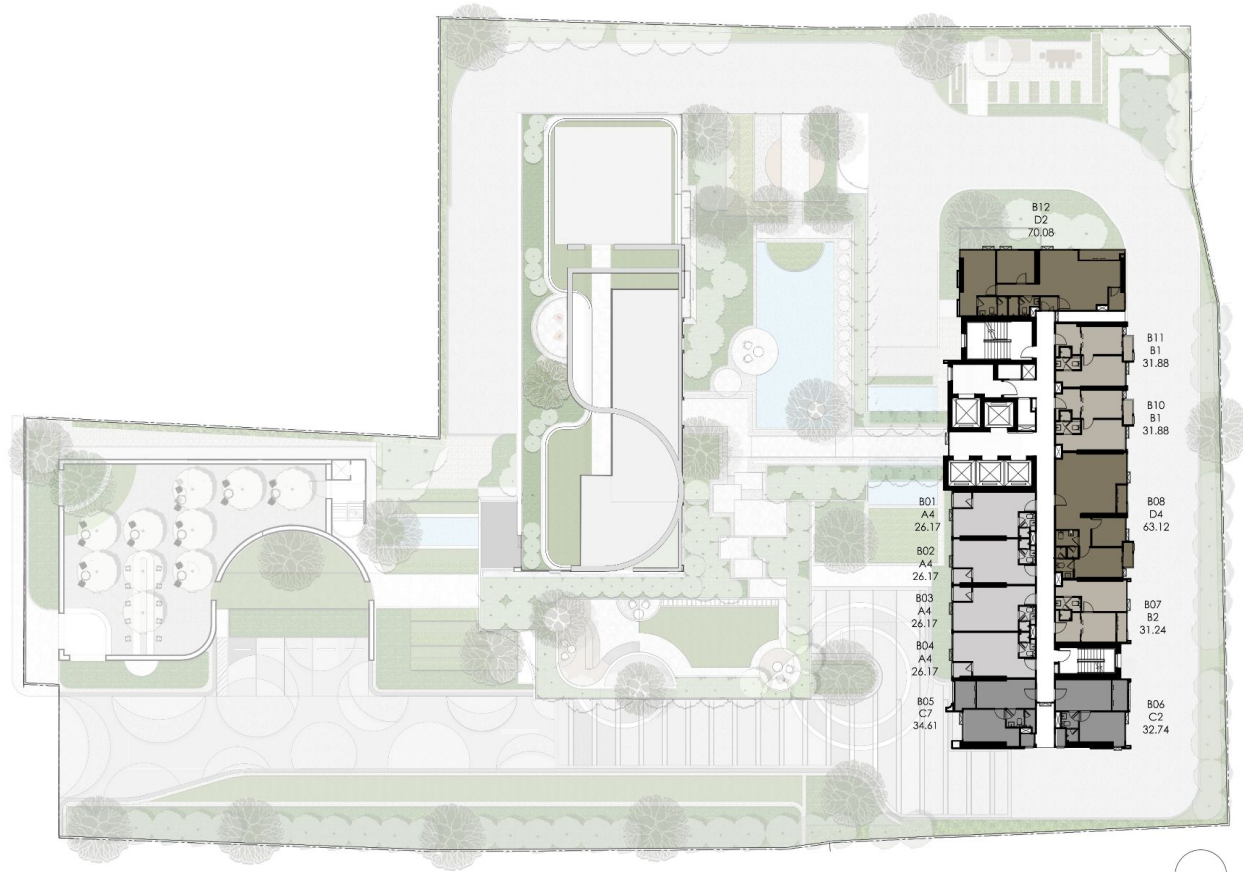


34<sup>TH</sup>, 35<sup>TH</sup>, 38<sup>TH</sup>, 45<sup>TH</sup> FLOOR PLAN

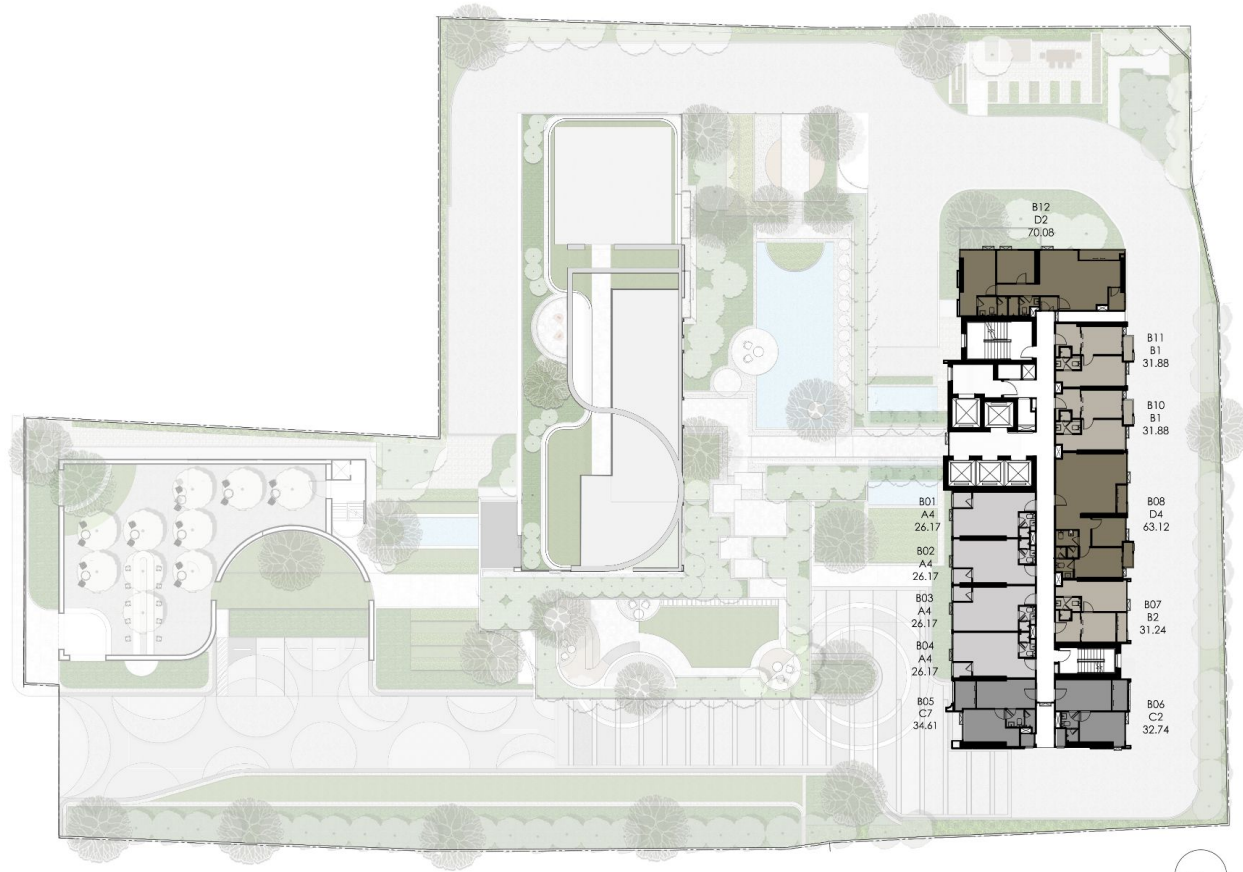


36<sup>TH</sup> FLOOR PLAN



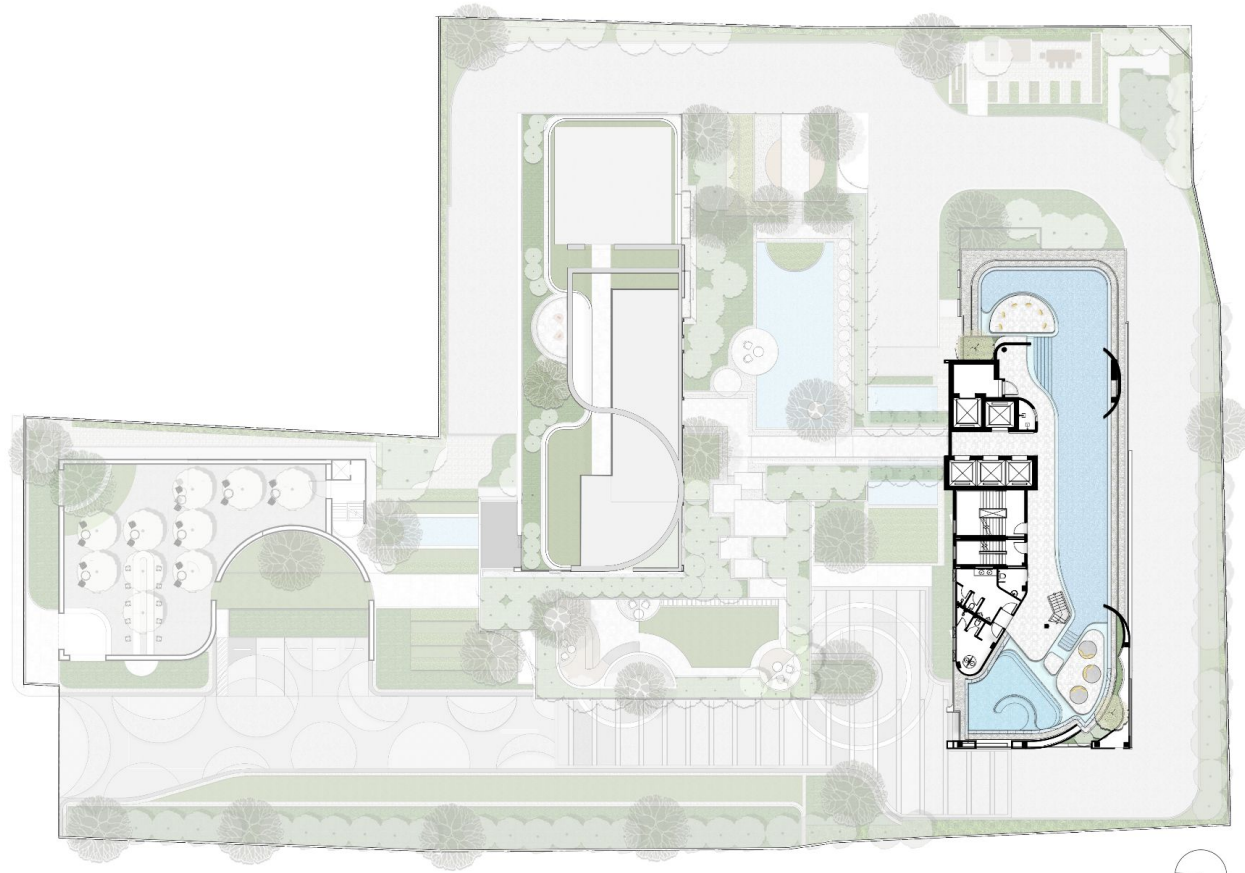


37<sup>TH</sup>, 39<sup>TH</sup>, 40<sup>TH</sup>, 41<sup>ST</sup>, 42<sup>ND</sup>, 43<sup>RD</sup>, 44<sup>TH</sup> FLOOR PLAN

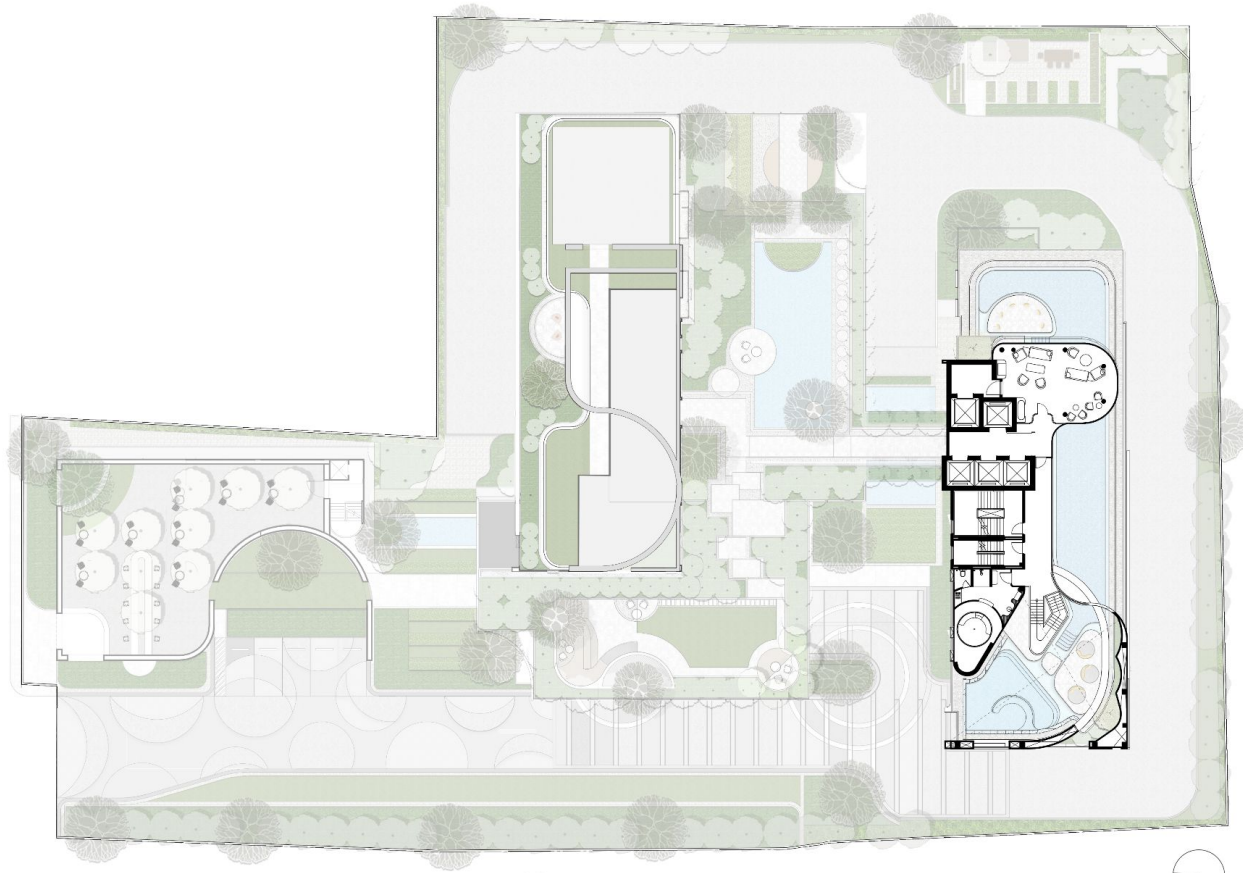


46<sup>TH</sup>, 47<sup>TH</sup>, 48<sup>TH</sup>, 49<sup>TH</sup> FLOOR PLAN



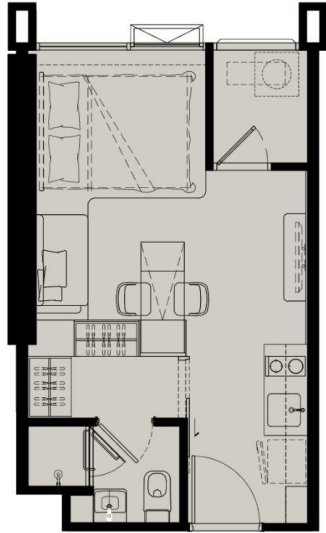
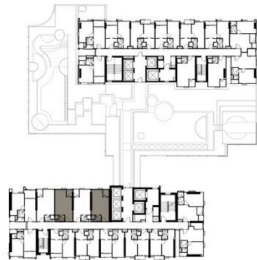


50<sup>TH</sup> FLOOR PLAN



51<sup>ST</sup> FLOOR PLAN



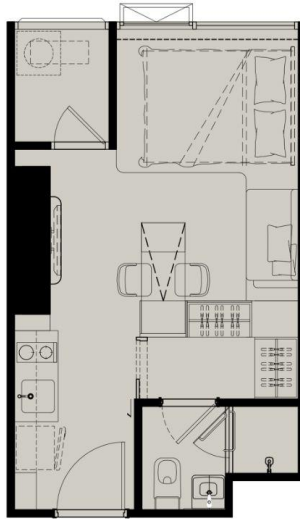
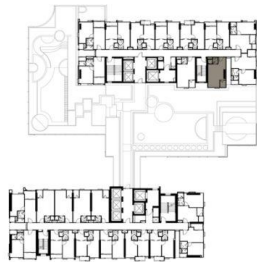


TYPICAL UNITS

A1

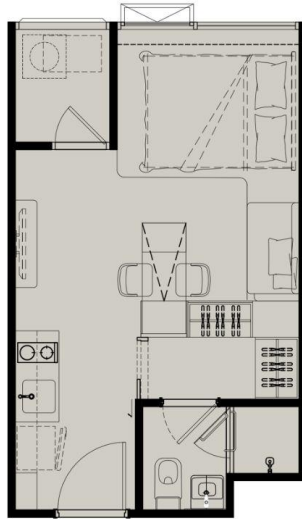
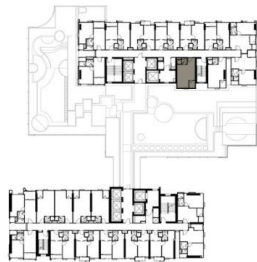
24.19 SQ.M.

UNIT NO. 01,03

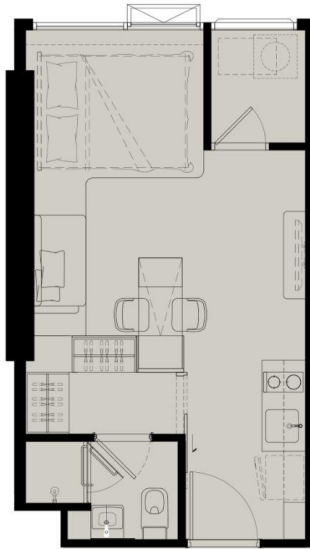
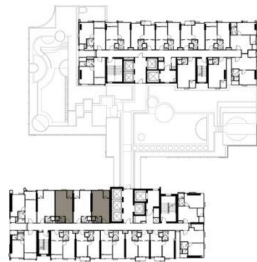


TYPICAL UNITS  
A2  
24.97 SQ.M.





TYPICAL UNITS  
**A3**  
25.75 SQ.M.



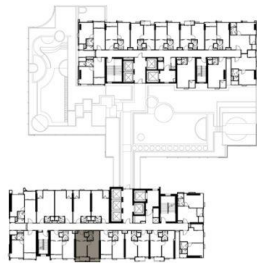
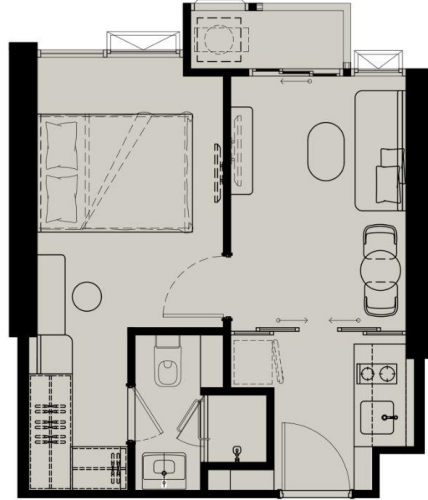
TYPICAL UNITS

A4

26.17 SQ.M.

UNIT NO. 01,03



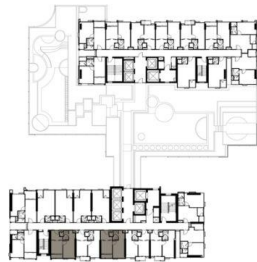


TYPICAL UNITS

**B1**

31.88 SQ.M.

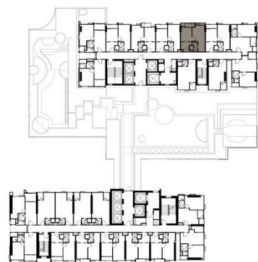
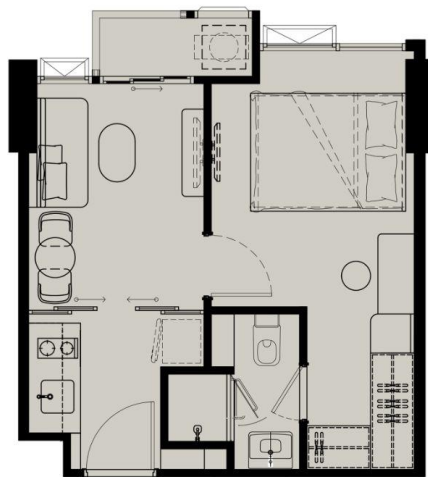
UNIT NO. 08



TYPICAL UNITS

B2

31.24 SQ.M.



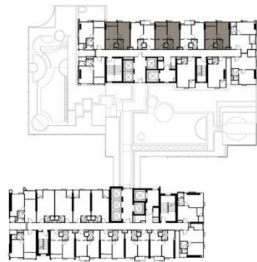
TYPICAL UNITS

**B3**

31.28 SQ.M.

UNIT NO. 06

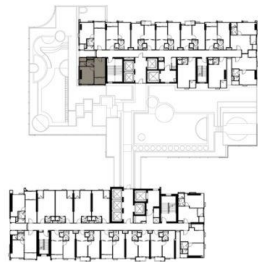
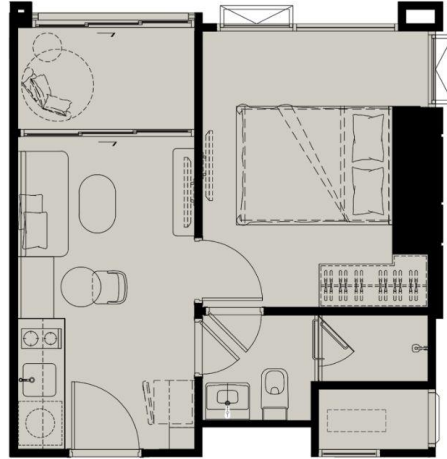




TYPICAL UNITS

B4

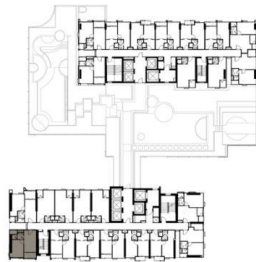
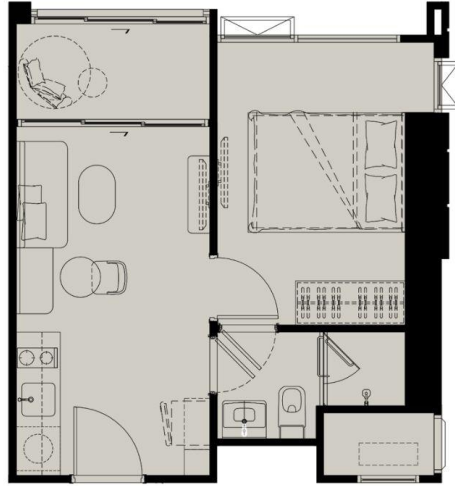
31.36 SQ.M.



TYPICAL UNITS

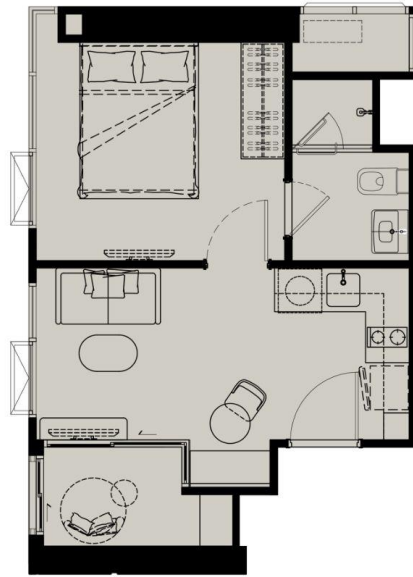
C1

32.54 SQ.M.

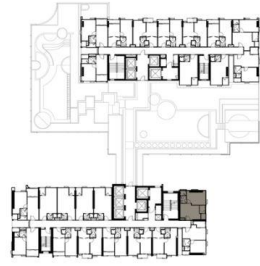
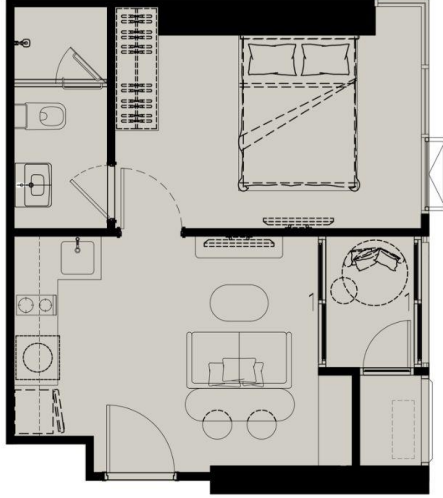


TYPICAL UNITS  
C2  
32.74 SQ.M.

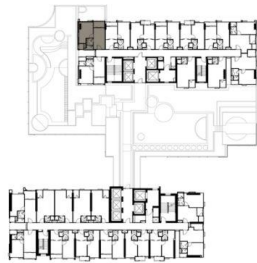
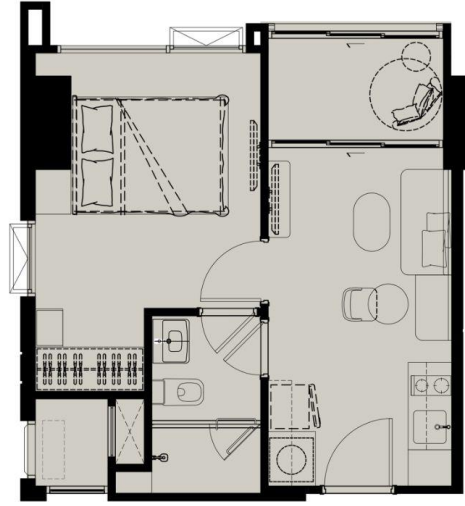




TYPICAL UNITS  
**C3**  
33.61 SQ.M.



TYPICAL UNITS  
**C4**  
33.61 SQ.M.

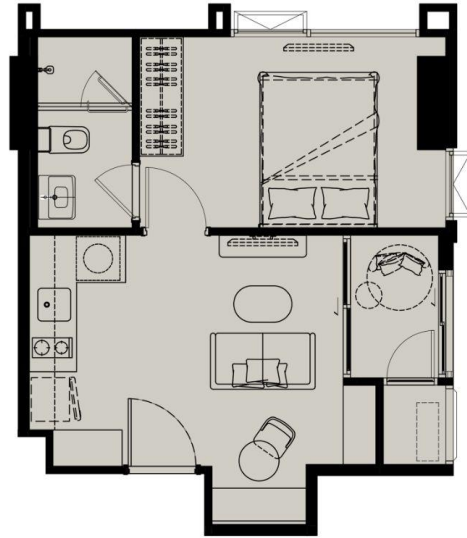


TYPICAL UNITS

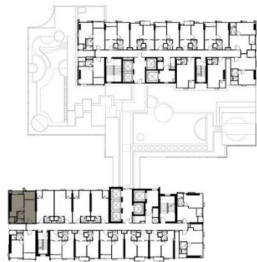
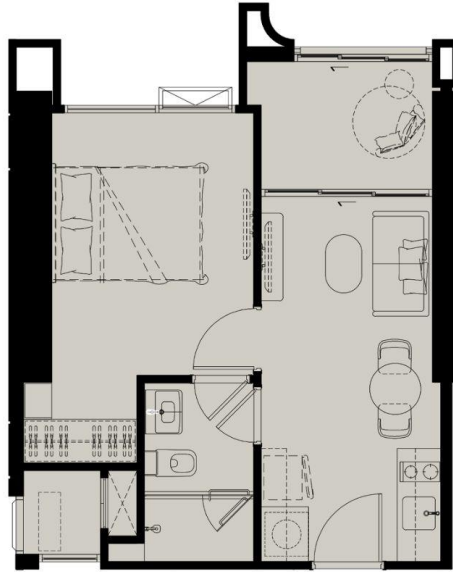
C5

33.74 SQ.M.





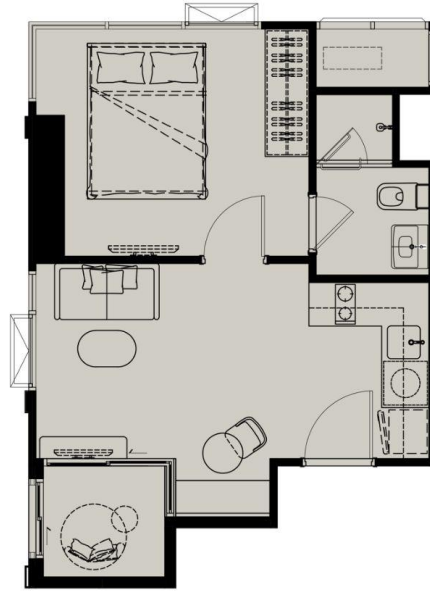
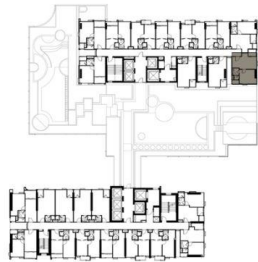
TYPICAL UNITS  
**C6**  
34.58 SQ.M.



TYPICAL UNITS

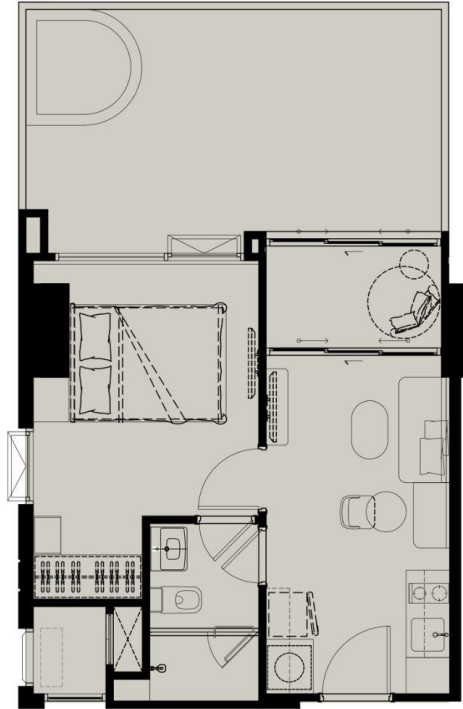
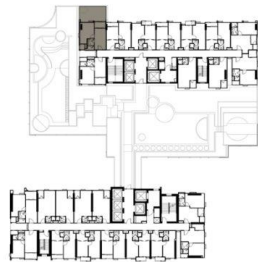
C7

34.61 SQ.M.

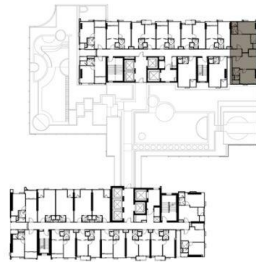


TYPICAL UNITS  
**C8**  
34.87 SQ.M.





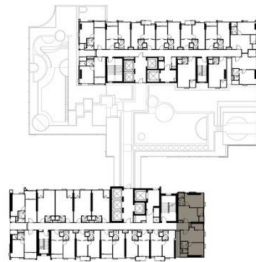
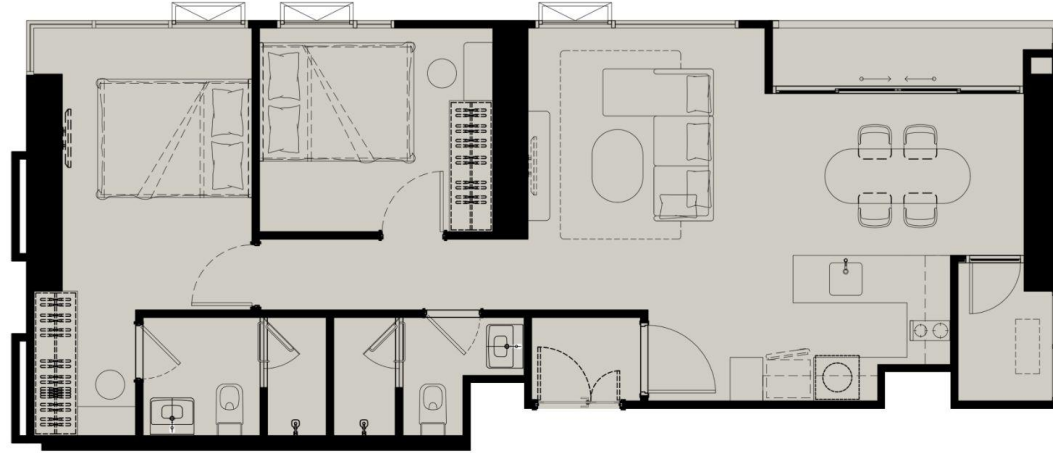
TYPICAL UNITS  
C9  
53.00 SQ.M.



TYPICAL UNITS

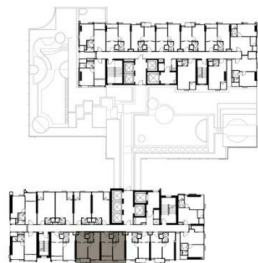
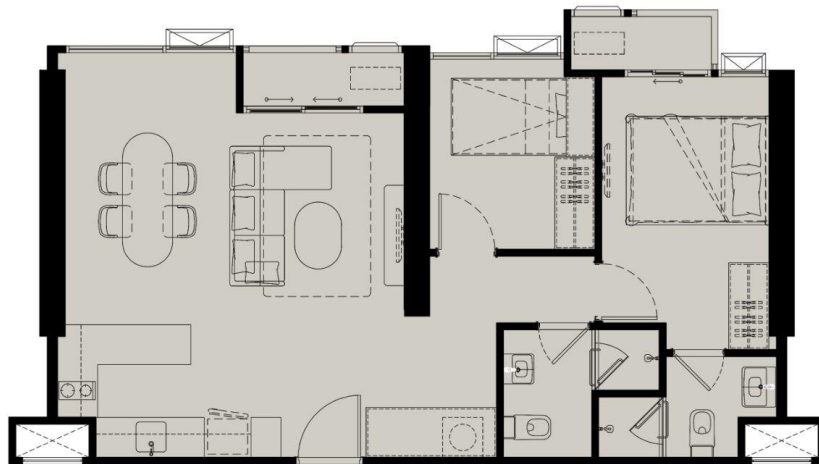
D1

72.85 SQ.M.

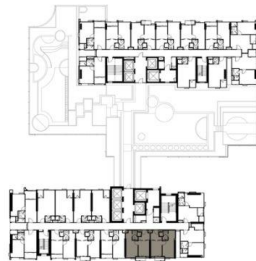
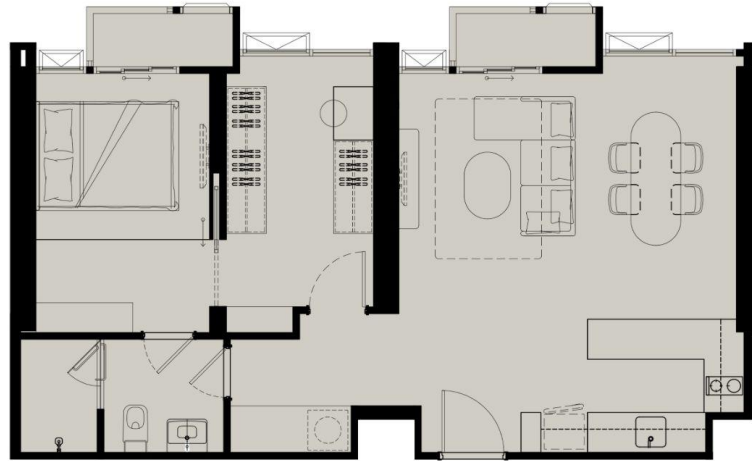


TYPICAL UNITS  
D2  
70.08 SQ.M.

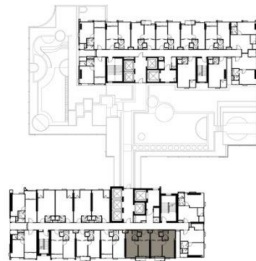




TYPICAL UNITS  
**D4**  
63.12 SQ.M.



TYPICAL UNITS  
**D5**  
63.76 SQ.M.



TYPICAL UNITS

D5

63.76 SQ.M.



## 月亮在你的宇宙中心

The REFERENCE SATHORN 距离  
Wongwian Yai BTS 站仅 130 米。项目距  
离 Sathorn-Silom 地区只有几站路程, 从长  
远来看, 项目会被认为是曼谷第一个也是最重要  
的一个中央商务区。这个无与伦比的区域提供  
一系列生活方式的选择, 有最好的娱乐, 也有著  
名的教育中心。



# Reference

SATHORN - WONGWIANYAI

SCASSET

Project Owner: SC Asset Three Co., Ltd., Company's registered no. 0105563019046; Head Office: 1010 Vibhavadi Rangsit Road, Chatuchak Sub-district, Chatuchak District, Bangkok, 10900; Chief Executive Officer: Mr. Nuttaphong Kunakornwong; Registered Capital: 50,000,000 Baht. The Project: Reference Sathorn-Wongwianyai as a condominium having 3 buildings comprised of 1) Residential Building (Building A), a building of 32 storeys; 2) Residential Building (Building B), a building of 51 storeys; and 3) Commercial Building (Building C), a building of 1 storey. Total of 819 units (comprised of 815 residential units and 4 commercial units) as well as 2 skywalks for connection. Project's location: Soi Krung Thonburi 2, Bang Lamphu Lang Sub-District, Khlong San District, Bangkok, land title deed no. 2687, 7876 and 7877 located at Tambol Bang Lamphu Lang, Amphur Khlong San, Bangkok, approximate area 3 Rai 2 Ngan 72.8 Square Wah. The land has obligation with Siam Commercial Bank PCL. The Project will start the construction around September 2022 and expect to complete around November 2024. The Project will be registered the condominium after completion of the construction and transfer of ownership shall be done within 30 days after completion of registration of condominium and juristic person of condominium. The condominium unit owner shall pay for common property maintenance fee and sinking fund as specified by the regulations of the condominium juristic person.\*Conditions are specified by the company and the company reserve the right to change without advanced notice.\*